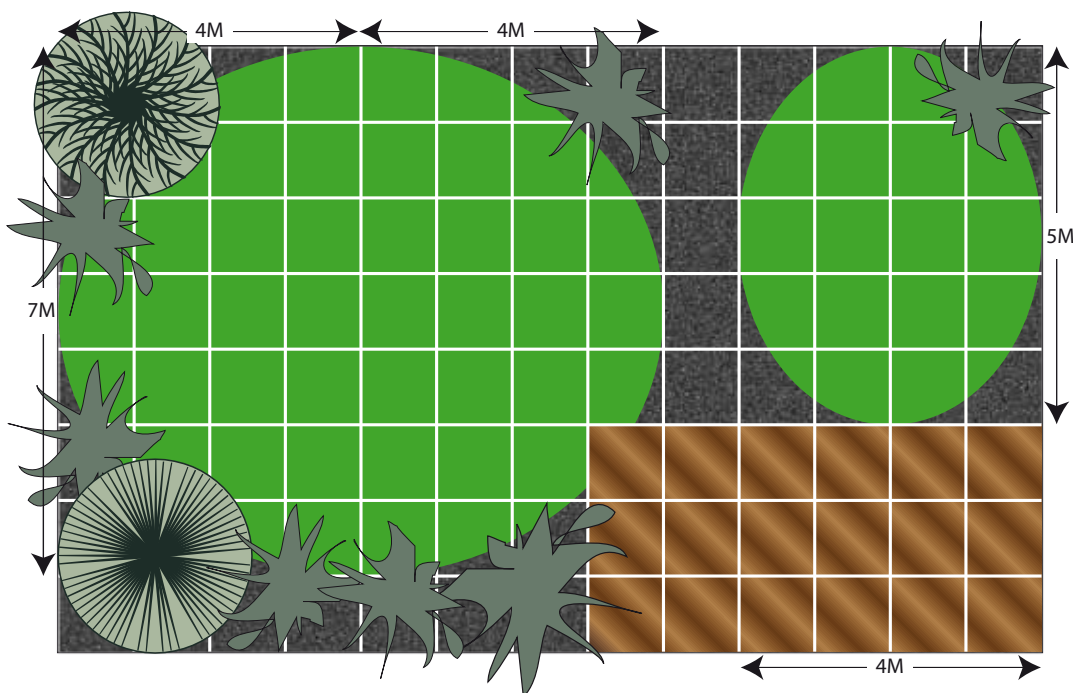


Project Planner

The artificial lawn planner will help you to calculate how much artificial grass you will need and which ancillary items are required for a successful installation with the minimum of waste.



Step 1

Measure the dimensions of the lawn areas you wish to cover (preferably in metres) and plot this onto the blank grid provided.

Step 2

The artificial grasses are supplied in 4 metre roll width and up to 25 metres on a roll. Some grasses are also available in a 2 metre roll width. Work out which is the most efficient way to lay the rolls ensuring that all the sections run in the same direction to give a consistent finish.

Step 3

The length of the join between sections determines the length of the jointing tape needed and a tube of adhesive is required for each 3 metres of tape.

Step 4

We recommend that a weed membrane is laid under the artificial lawn, it is only available in a 4 metre roll width but can be laid in any direction and simply overlapped to form a join.

We are only a phone call away for any help or advice you may need along the way. Please call us with any questions you may have and we will be delighted to answer them.



1 square = 1 metre²

